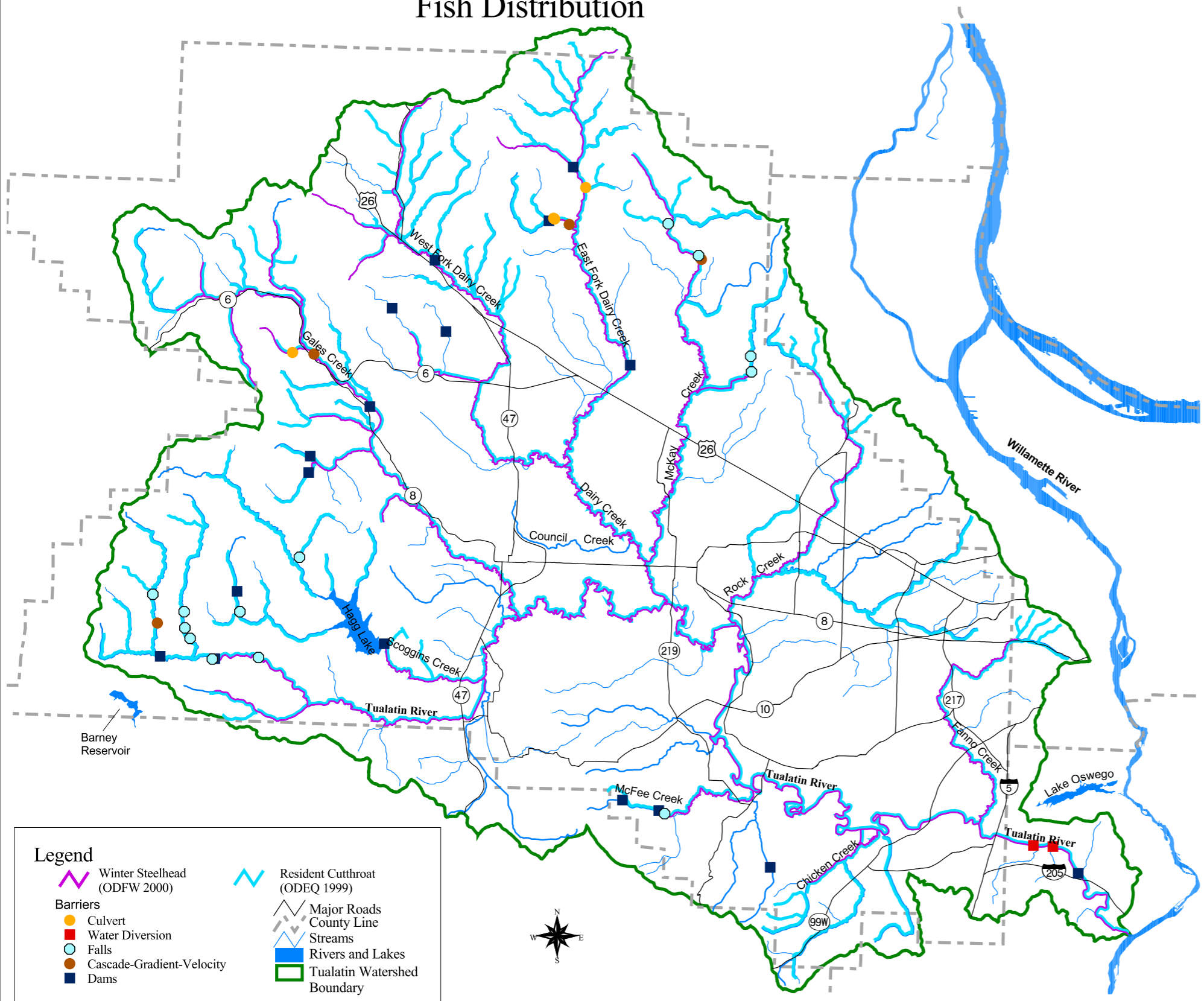


Fish Distribution



- Legend**
- Winter Steelhead (ODFW 2000)
 - Resident Cutthroat (ODEQ 1999)
 - Barriers**
 - Culvert
 - Water Diversion
 - Falls
 - Cascade-Gradient-Velocity
 - Dams
 - Major Roads
 - County Line
 - Streams
 - Rivers and Lakes
 - Tualatin Watershed Boundary

Data Source: ODFW (1999 and 2000), ODEQ (1999), Tualatin River Watershed Information System CD (1998) and Metro (RLIS Lite 2000)

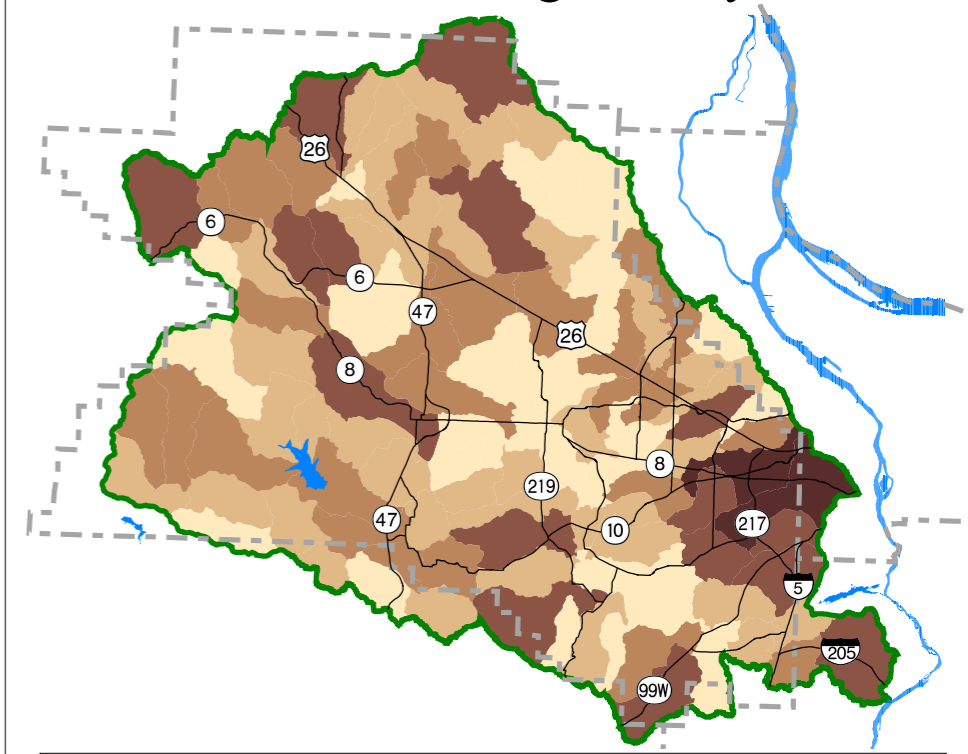
Note: This information is for general and planning purposes only. It is intended to be used together with the text on the adjacent corresponding page in the Tualatin River Watershed Atlas.

Tualatin River Watershed Fish Distribution and Road Crossing Density

Tualatin River
Watershed Council
Atlas Project



Road Crossing Density



- Legend**
- Number of Road Crossings
- Less than or equal to 12
 - 13 to 22
 - 23 to 36
 - 37 to 55
 - 56 to 133
- Major Roads
 - Streams
 - County Line
 - Major Rivers and Lakes

Data Source: Tualatin River Watershed Information System CD (1998)