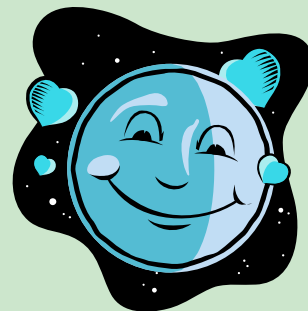


Moonshadow Messenger

So you know what's happening in Moonshadow Park...



Tualatin Hills Park and Recreation District

Park Stewards Help Out on the SOLV Washington County Clean and Green Project at Moonshadow Park

10 neighbors and park stewards arrived around 9 AM on Saturday October 15th and gave a little TLC to the native plants on the slope north of Ash Creek. Taking advantage of the softened soils from the



Volunteers (and neighbors!) Denise and Judy

rains we've had recently, they dug up Himalayan blackberry roots from around the native vegetation we've planted over the last year and a half.

Approximately 4 cubic yards of blackberry roots were removed and piled up to dry. Many of the native shrubs and trees were buried under the aggressive growth of these non-native blackberries. Now, shrubs have a better chance to really reach for the sunlight.



Gerald is a return volunteer on this project.

Thanks, Gerald!

Our wet spring helped a lot of the native shrubs and trees build up the strength to

survive this year's droughty summer. We found only a few had succumbed to the dry season; most appeared healthy,



Tall Oregon-grape

even if the fall colors were showing in their leaves. New buds and stem growth were seen in most plants and it will be exciting to see them in the spring when their new leaves burst out in their fine greenery!

These plants were selected for this site because they are already adapted to our climate. They are typically able to withstand our wet winters and the long dry summers. Adding to this benefit package, they are also adapted to the bugs which live here and can usually withstand being chewed upon by these wee critters!



Pacific ninebark

For a good starter list of native plants you might want for your own garden, contact the Natural Resources Department at 503-629-6305 x2952 or visit our web site at <http://www.thprd.org/facilities/nr.cfm>.

Go Natives! Native vegetation survives our wet spring and very dry summer

Upcoming Restoration Events COME OUT AND JOIN US!

- November 19, 2005, 9-12: **PATHWAY CARE** We'll be trimming back vegetation along the path. Trimmings from the native plants will be potted up on-site. Neighbors will store and care for the plants until we're ready to replant them at one of the upcoming planting parties!
- December 10, 2005, 9-12: **NATIVE PLANTING PARTY** Working through the Native Plant Co-op, the Tualatin River Watershed Council will provide about 400 native shrubs and trees for the areas cleared of blackberries.
- February 18, 2006, 9-12: **NATIVE PLANTING PARTY** Volunteers will replant the native shrubs and trees we potted up back in November. We'll also do a little TLC for the rest of the plants we put in this winter by pulling weeds around them.
- April 22, 2006, 9-1: **SOLV-It 2006 ENGLISH IVY REMOVAL** Volunteers will begin the removal of the English ivy patch on the north-central edge of the riparian area under the large western redcedars.
- May 20 2006, 9-1: **SOLV Down By The Riverside ENGLISH IVY REMOVAL FOLLOW-UP** We'll continue to remove the English ivy in the park.



We're on the Web at www.thprd.org

Natural Resources Department
5500 SW Arctic Drive, Suite 2
Beaverton, OR 97005-4162
503-629-6205 x2952



We're on the Web at www.trwc.org

P. O. Box 338
Hillsboro, OR 97123-0338
503-846-4810

A Moonshadow History

The Moonshadow Project started back in the late 90's when the Tualatin River Watershed Council, partnering with the Tualatin Hills Park and Recreation District, began restoration in the eastern section of the park. Nonnative blackberries dominated the streambanks and native vegetation was being out-competed. The Council and the Park District organized several volunteer work parties to remove the nasty blackberries and replant the area with native shrubs.

Erosion and siltation were also reducing the water quality in the stream. The Park District received a grant in 1997 and installed some large logs at several locations to stabilize the stream bank and slow the rush of water through the park.

In 2001, SOLV adopted the project as one of their Team Up For Watershed Health sites. This 8-year commitment involved 3 years of intense restoration followed by 5 years of maintenance and monitoring. The Watershed Council has re-entered the game and has taken over the monitoring and restoration work along this valuable headwater habitat of Ash Creek.

Today, the riparian (streamside) areas in the eastern portion of the park are now dominated by native shrubs. The work continues today through the work of the Council, the Park District, SOLV, and, most importantly, the neighbors. *Thanks to all of you who have helped and supported this important work over the years.*



Do you know of a group that wants to do project together?
We can help!! Give us a call and we'll help tailor a project to your group's needs. Please contact Melissa Higgins, Volunteer Coordinator, at 503-629-6305 x2953 or mhiggins@thprd.org.